



FLAMINGOS 17

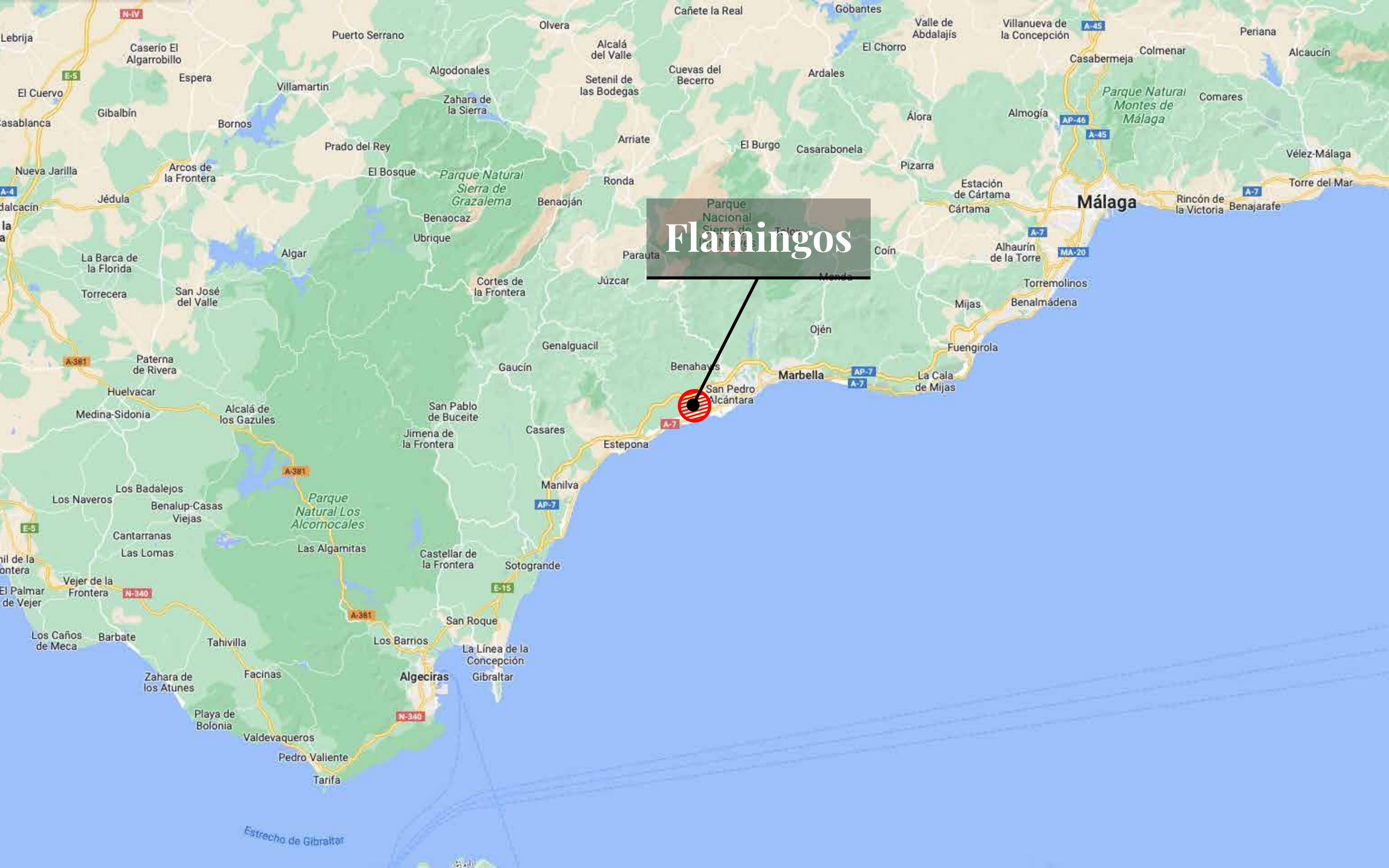
THE BEST PLOT ON SALE IN LOS FLAMINGOS
Magnificent sea views. Front line golf course.



An aerial photograph showing a golf course in the foreground, a residential development with modern houses in the middle ground, and a coastal town with the ocean in the background. A specific plot of land is highlighted with a white outline and black diagonal hatching. A black dot is placed at the center of this plot. Two text boxes are overlaid on the left side of the image, providing details about the plot for sale.

2.723 m2 Plot For Sale, with granted license to build, already made ecological walls and 5 Project proposals.

Located on the front line of the exclusive Tramores Golf, one of the three 18-hole golf courses in the Los Flamingos Urbanization.



Flamingos







1



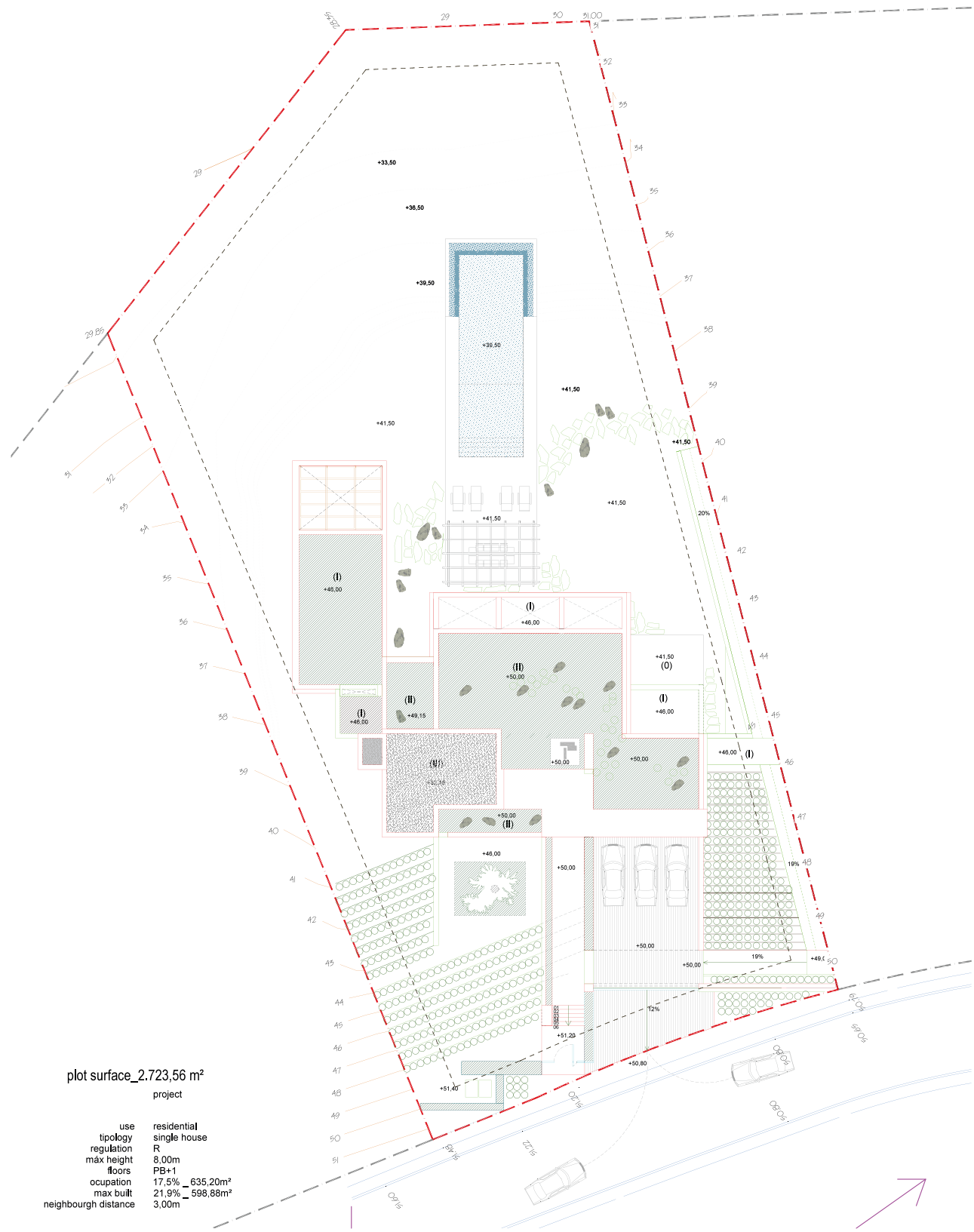
HOUSE
SURFACE
760 m2



BASEMENT
SURFACE
0 m2



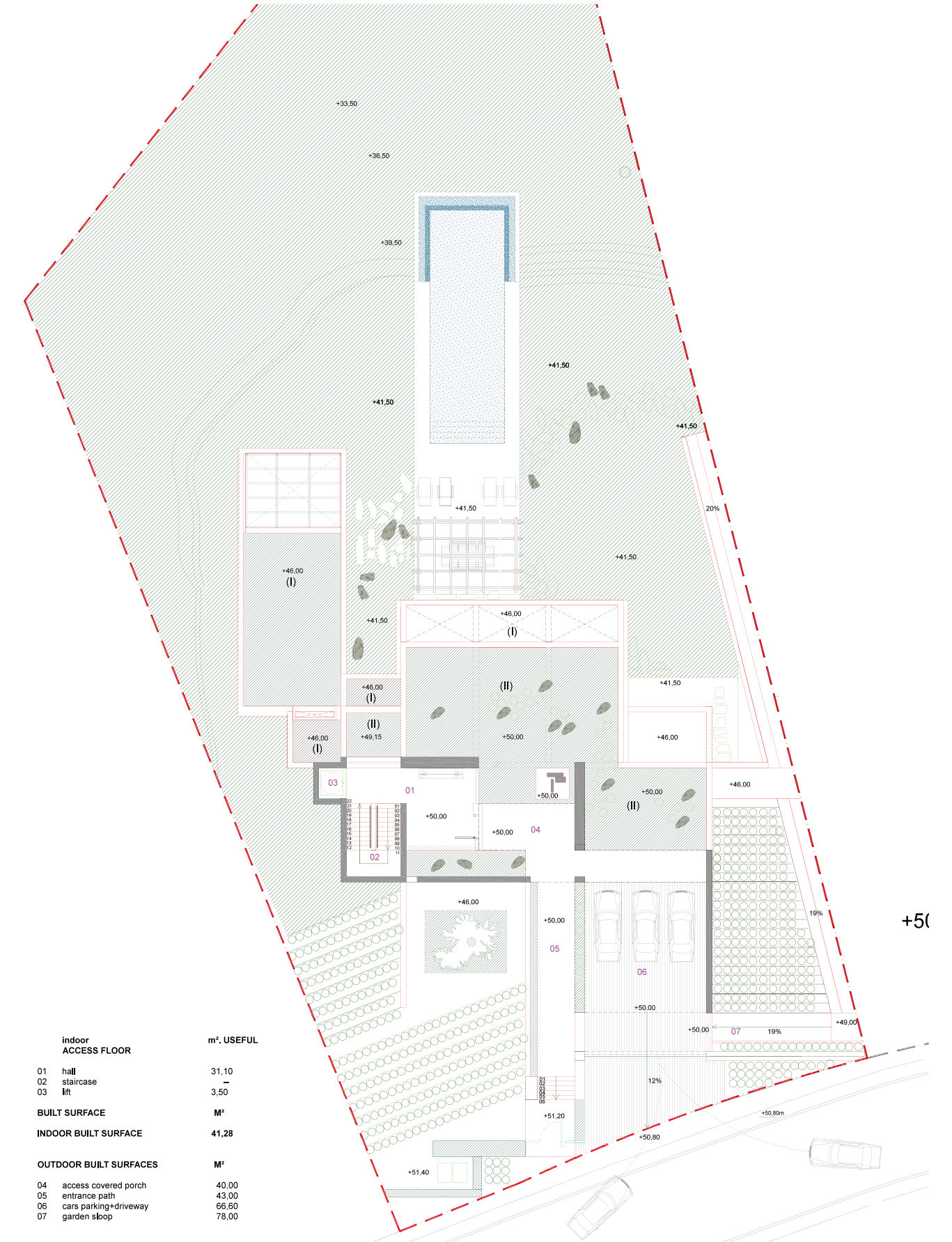
TERRACES
& PORCH
315 m2



plot surface_2.723,56 m²
 project
 use residential
 typology single house
 regulation R
 max height 8,00m
 floors PB+1
 occupation 17,5%_635,20m²
 max built 21,9%_598,88m²
 neighbour distance 3,00m



ID plan date 01.10.2018 scale 1/250
 EMPLACEMENT. URBANISTICAL FEATURES **001**



	m ² . USEFUL
INDOOR ACCESS FLOOR	
01 hall	31,10
02 staircase	-
03 lift	3,50
BUILT SURFACE	M²
INDOOR BUILT SURFACE	41,28
OUTDOOR BUILT SURFACES	M²
04 access covered porch	40,00
05 entrance path	43,00
06 cars parking+driveway	66,60
07 garden sloop	78,00



ID plan date 01.10.2018 scale 1/200
 ACCESS, FLOOR, Level +50,00m. FURNITURE AND SURFACES **002**





2



HOUSE
SURFACE

700 m²



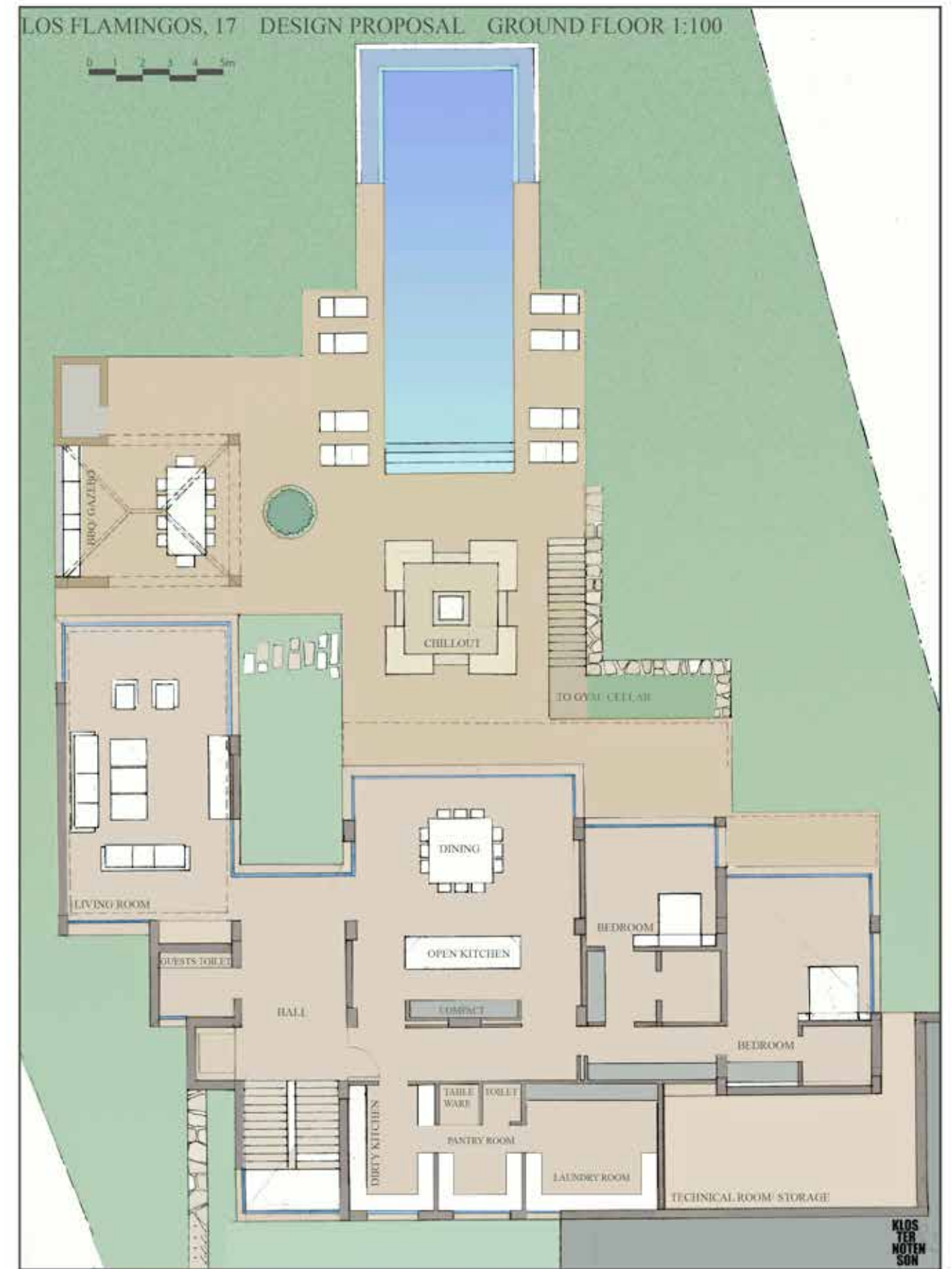
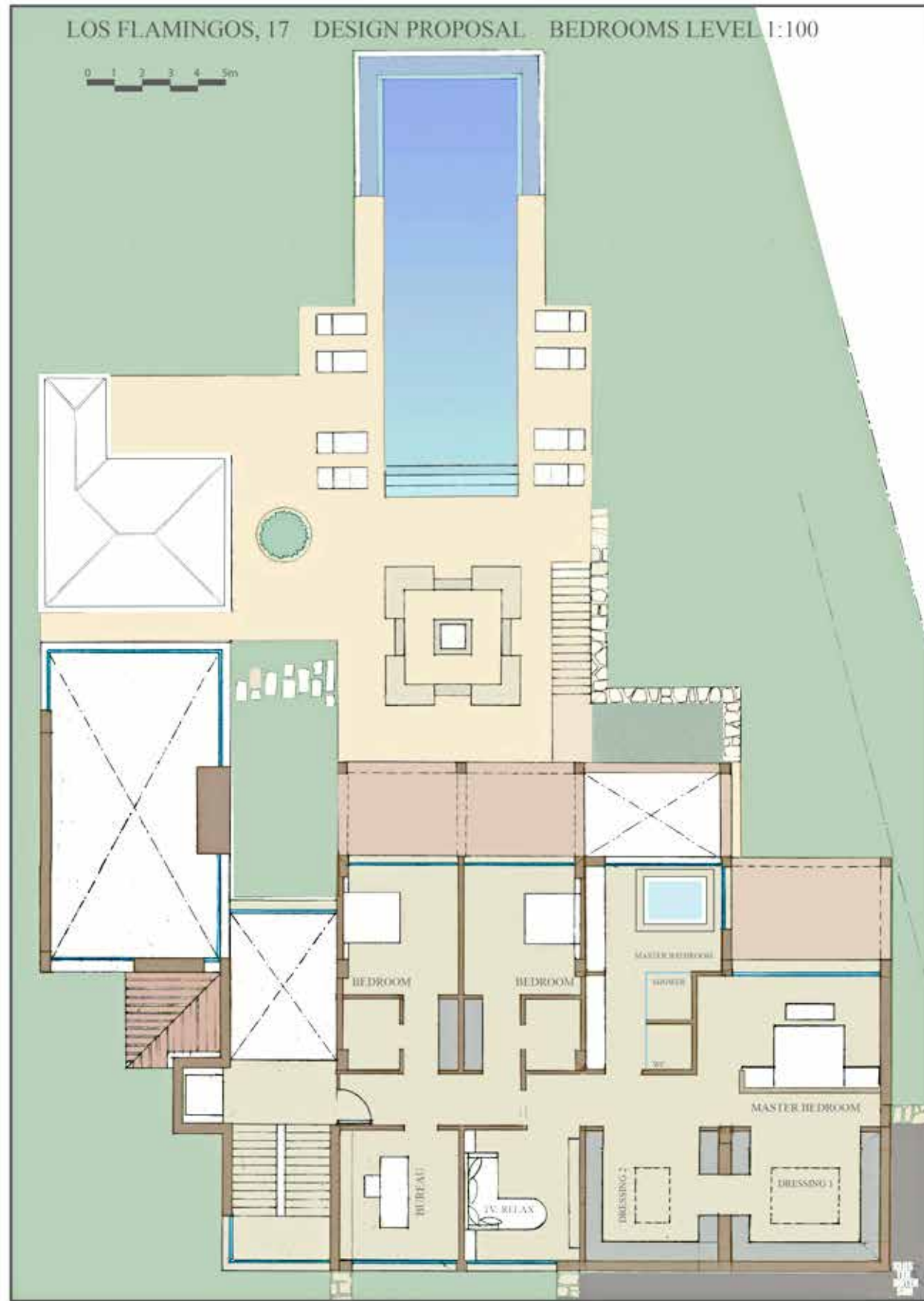
BASEMENT
SURFACE

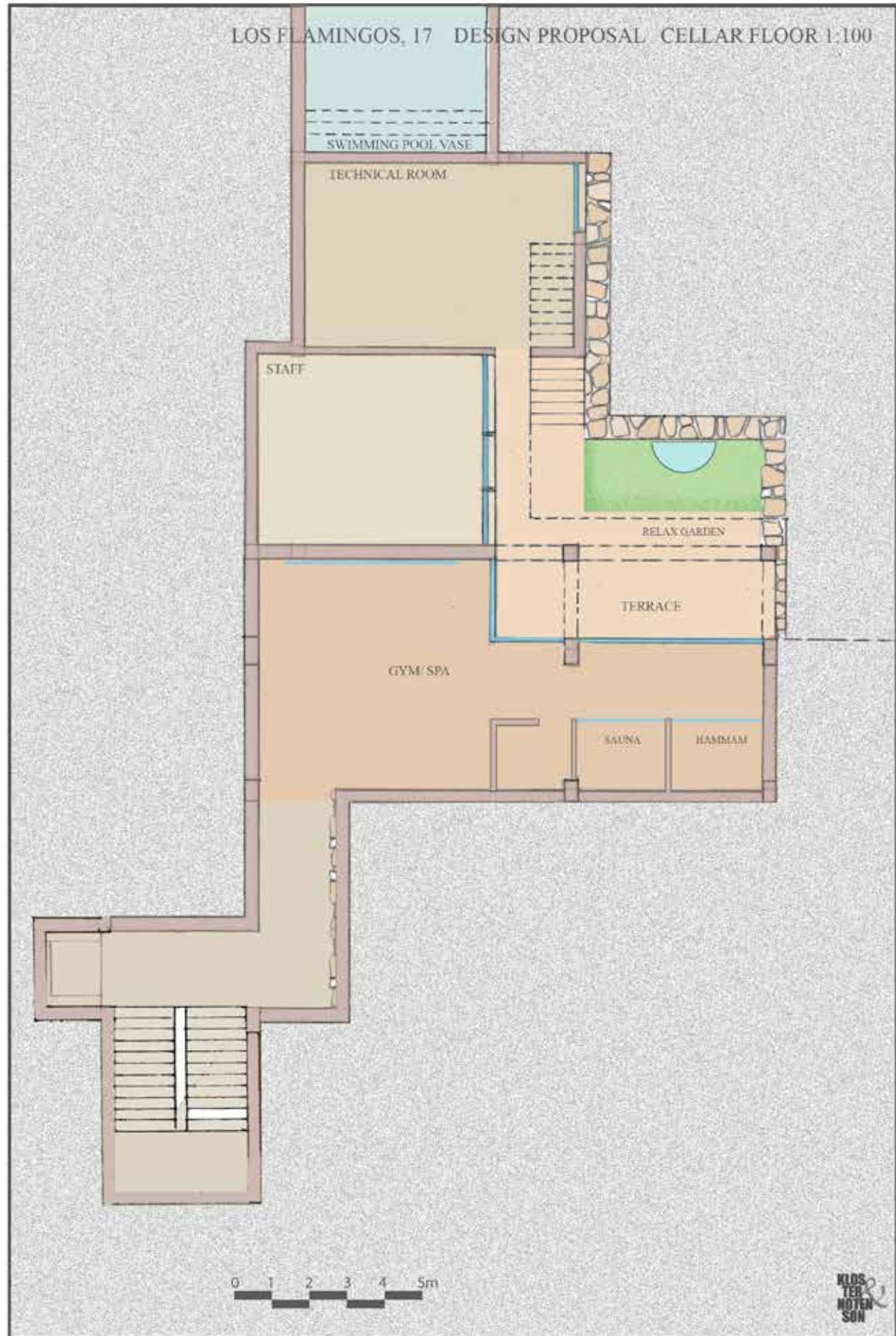
100 m²



TERRACES
& PORCH

300 m²







3



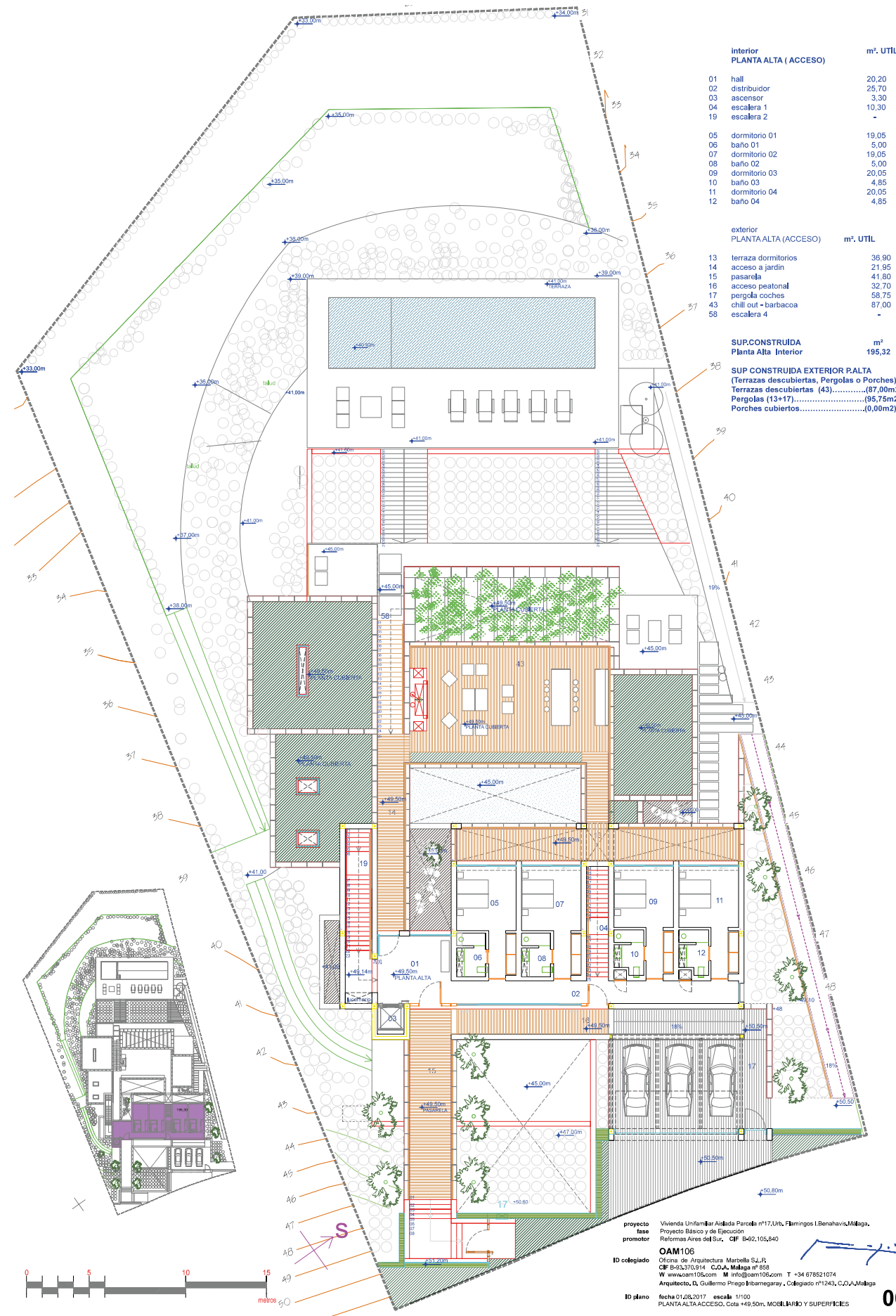
HOUSE
SURFACE
650 m2



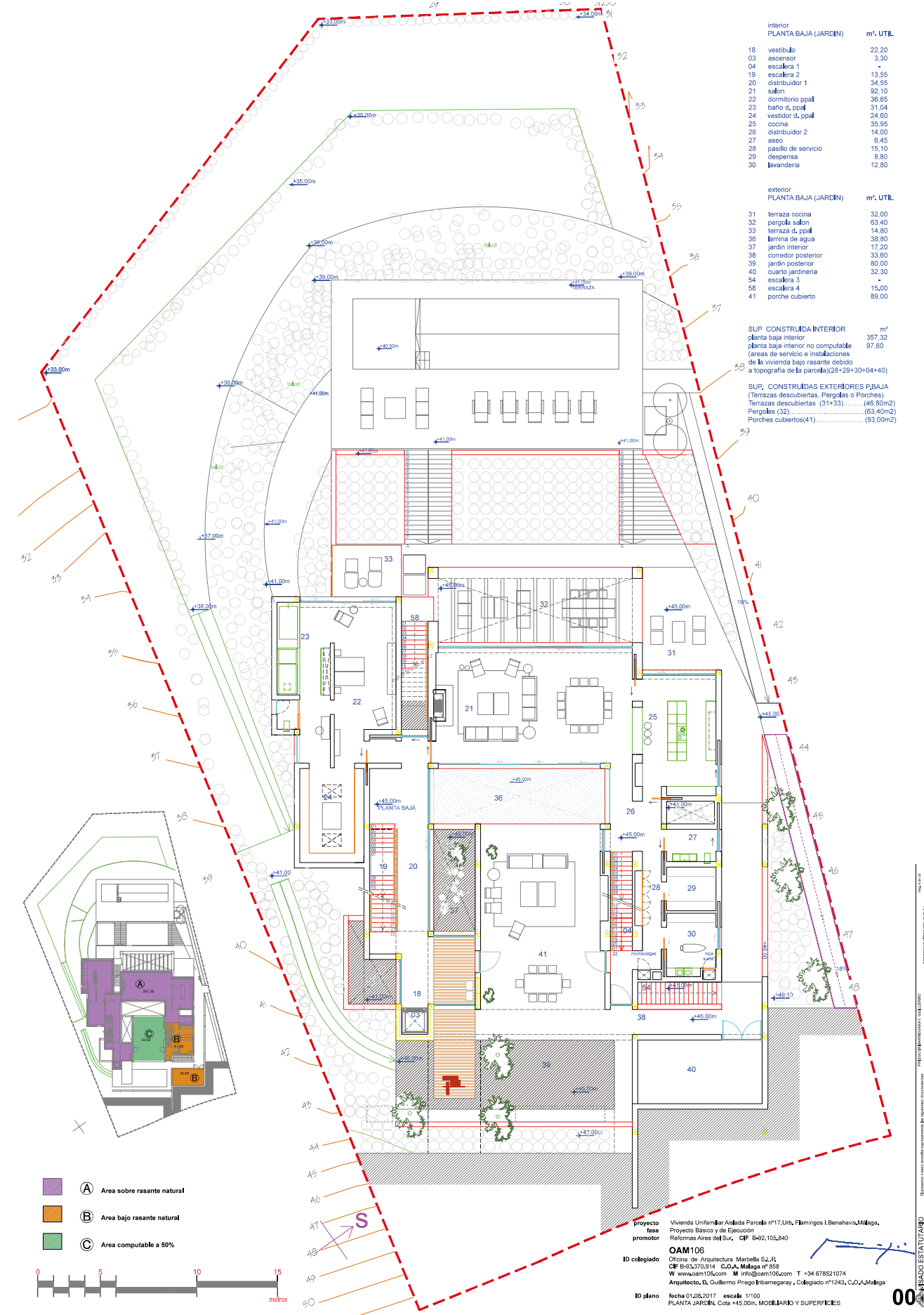
BASEMENT
SURFACE
484 m2



TERRACES
& PORCH
390 m2



proyecto Vivienda Unifamiliar Anclada Parcela nº17, Urban. Flamings I. Benahavís, Málaga.
 fase Proyecto Básico y de Ejecución
 promotor Reformas Areas del Sur, CIP B-42.105.840
 ID colegiado OAM106
 Oficina de Arquitectura Marbella S.L.P.
 CIP B-42.370.914 C.O.A. Málaga nº 658
 W: www.oam106.com M: info@oam106.com T: +34 678521074
 Arquitecto, D. Guillermo Priego Eibarregaray, Colegiado nº1243, C.O.A. Málaga
 ID plano fecha 01/08/2017 escala 1/100
 PLANTA ALTA ACCESO, Cota +49,50m, MOBILIARIO Y SUPERFICIES

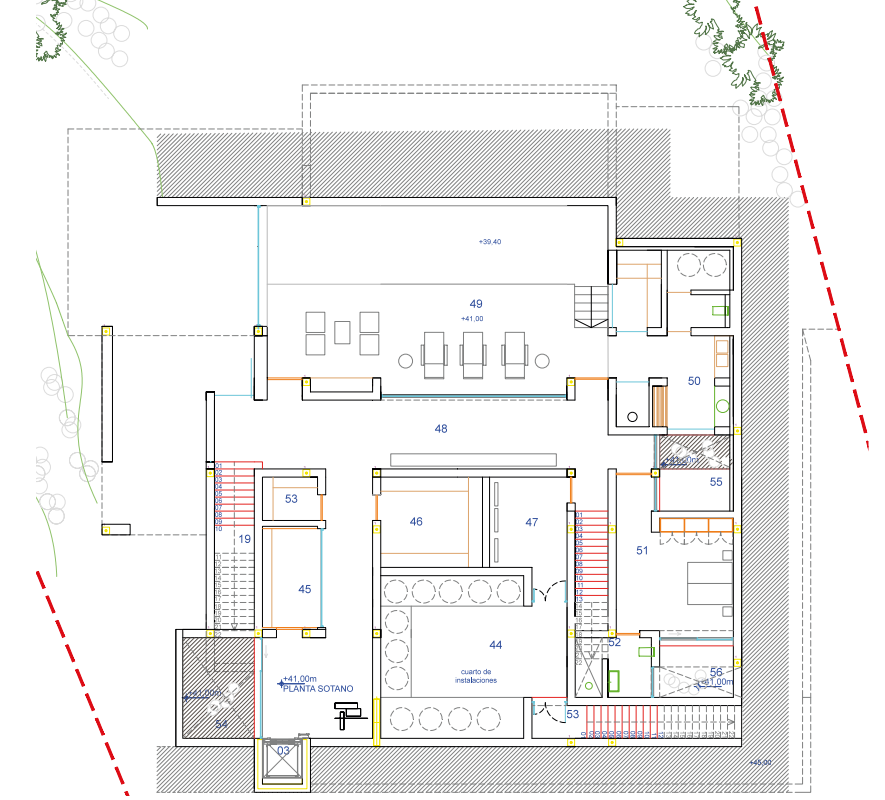


proyecto Vivienda Unifamiliar Anclada Parcela nº17, Urban. Flamings I. Benahavís, Málaga.
 fase Proyecto Básico y de Ejecución
 promotor Reformas Areas del Sur, CIP B-42.105.840
 ID colegiado OAM106
 Oficina de Arquitectura Marbella S.L.P.
 CIP B-42.370.914 C.O.A. Málaga nº 658
 W: www.oam106.com M: info@oam106.com T: +34 678521074
 Arquitecto, D. Guillermo Priego Eibarregaray, Colegiado nº1243, C.O.A. Málaga
 ID plano fecha 01/08/2017 escala 1/100
 PLANTA BAJA JARDIN, Cota +45,00m, MOBILIARIO Y SUPERFICIES

- A Area sobre rasante natural
- B Area bajo rasante natural
- C Area computable a 50%

REBORDADO ESTANTARIO
 REFORMAS AREAS DEL SUR, S.L.
 CIP B-42.105.840
 MOBLIARIO Y SUPERFICIES

REBORDADO ESTANTARIO
 REFORMAS AREAS DEL SUR, S.L.
 CIP B-42.105.840
 MOBLIARIO Y SUPERFICIES





4



HOUSE
SURFACE
530 m2

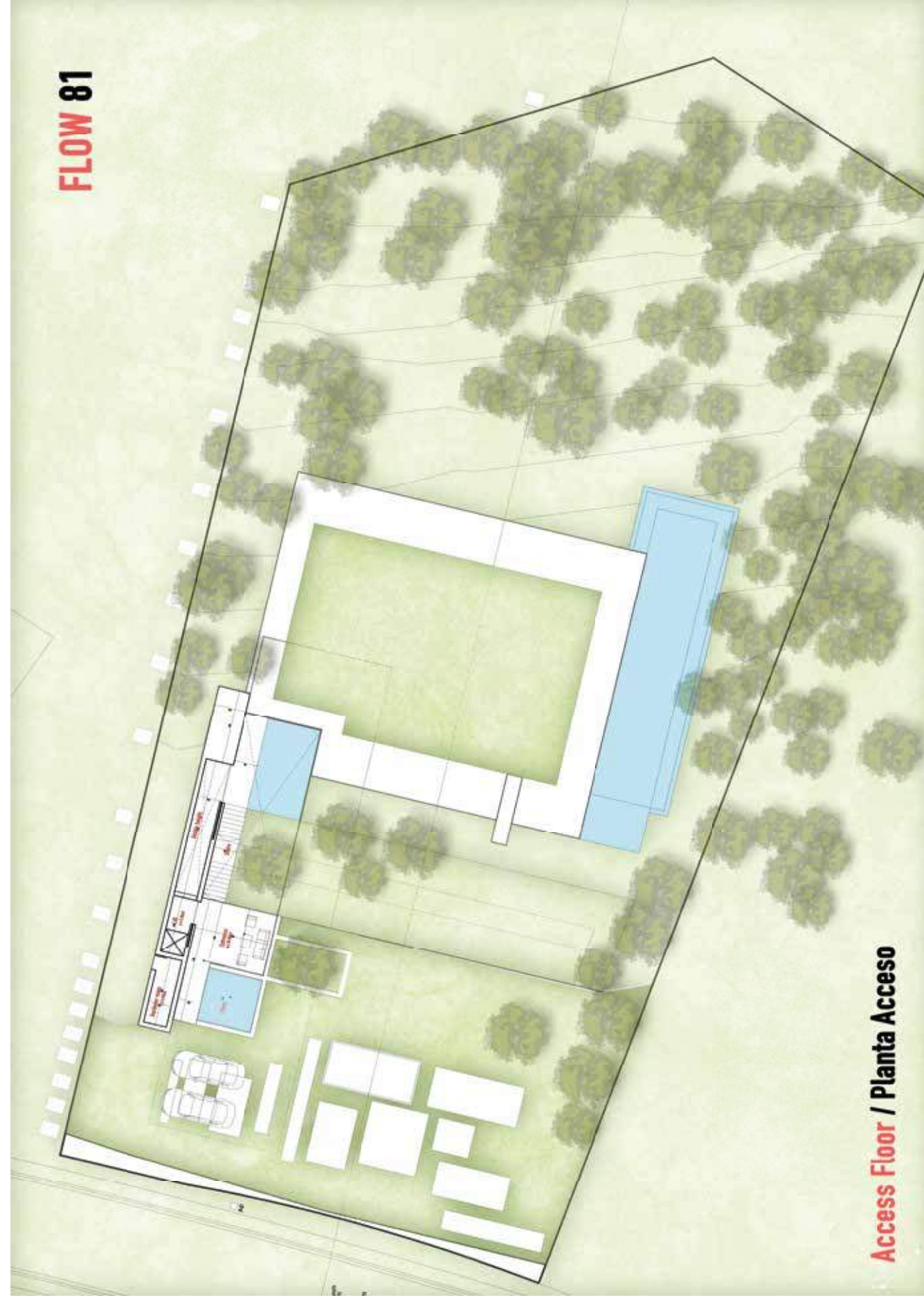
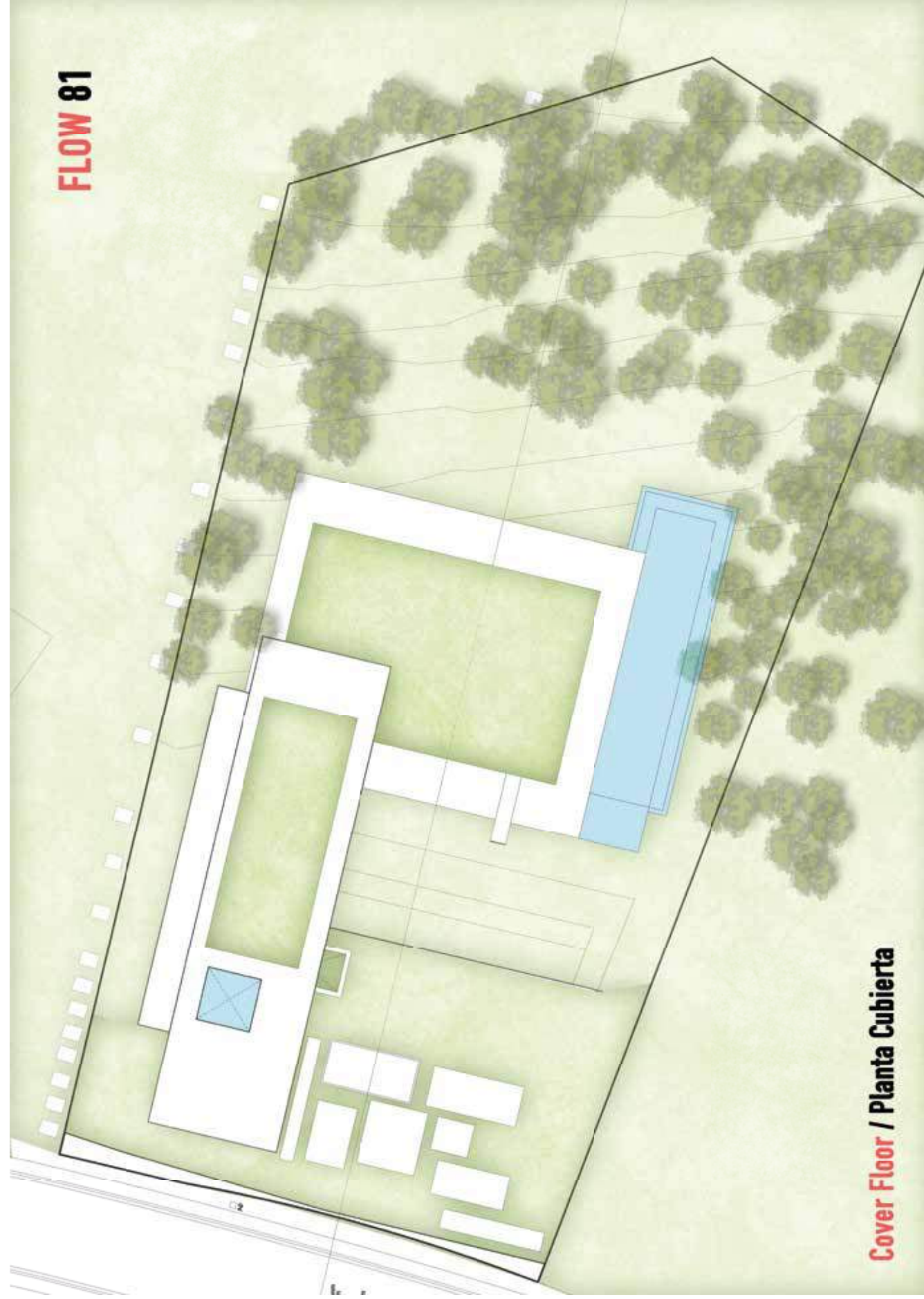


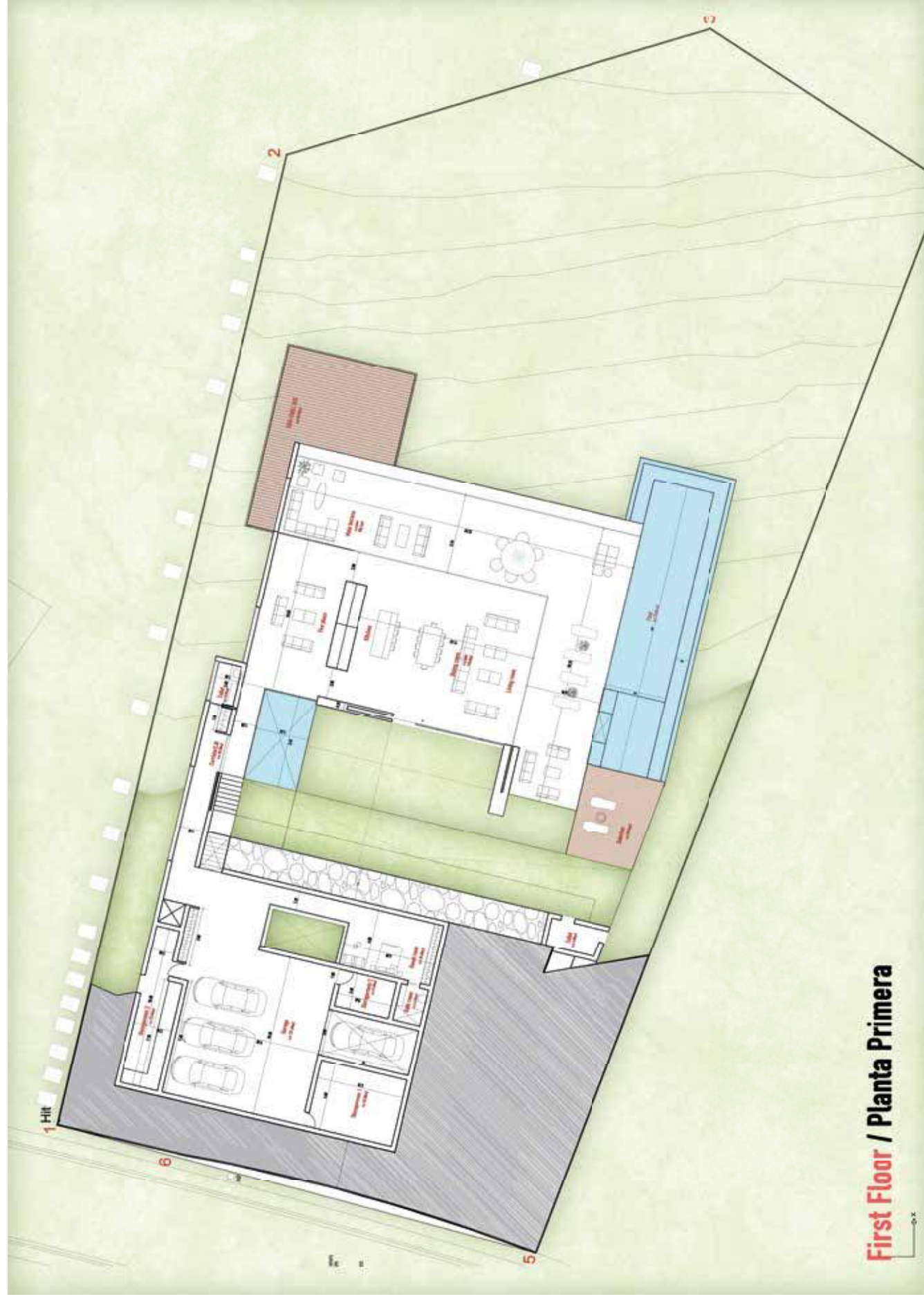
BASEMENT
SURFACE
286 m2



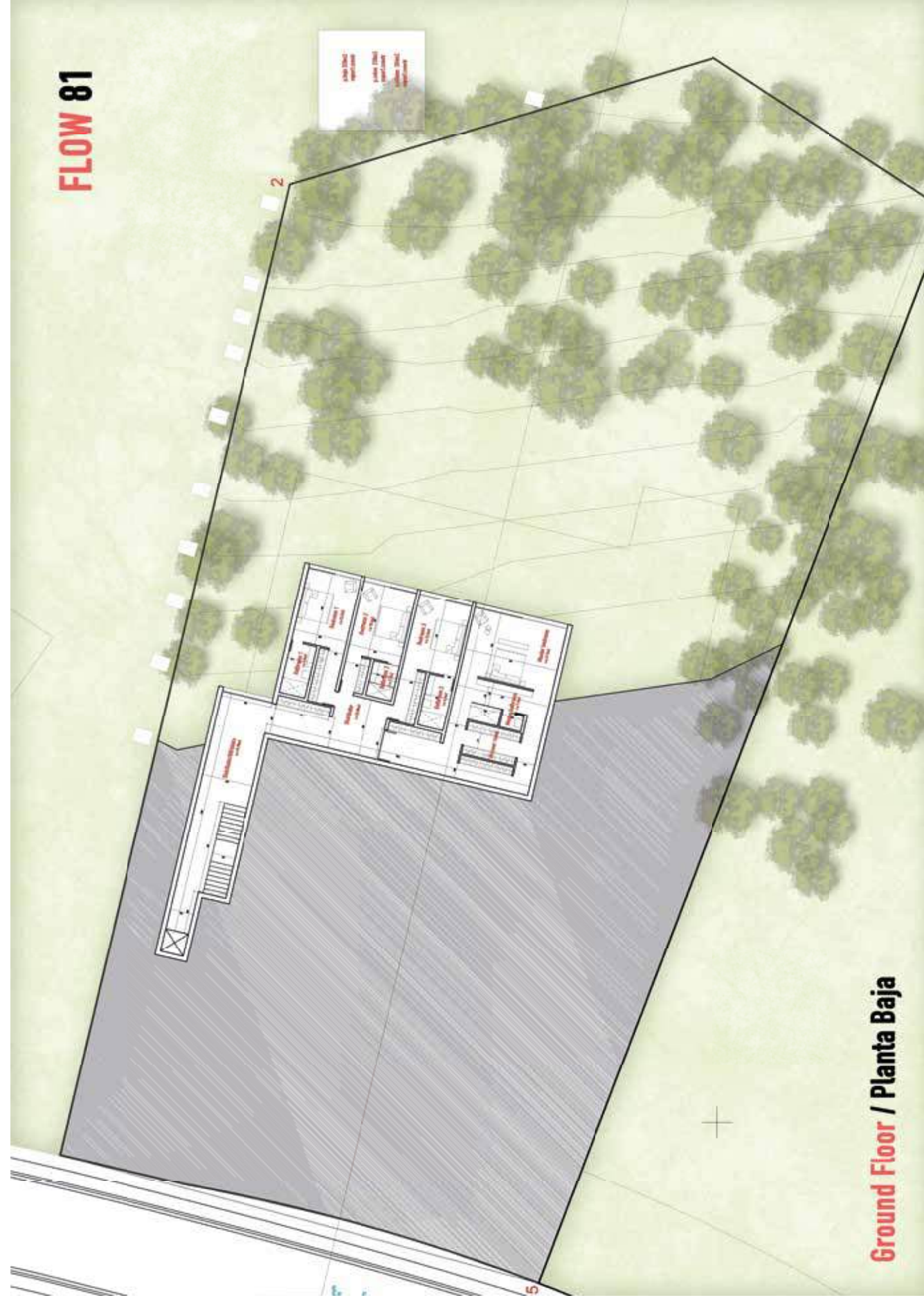
TERRACES
& PORCH
400 m2

FLOW81
ARCHITECTURE
INTERIOR DESIGN





First Floor / Planta Primera



FLOW 81

Ground Floor / Planta Baja



5



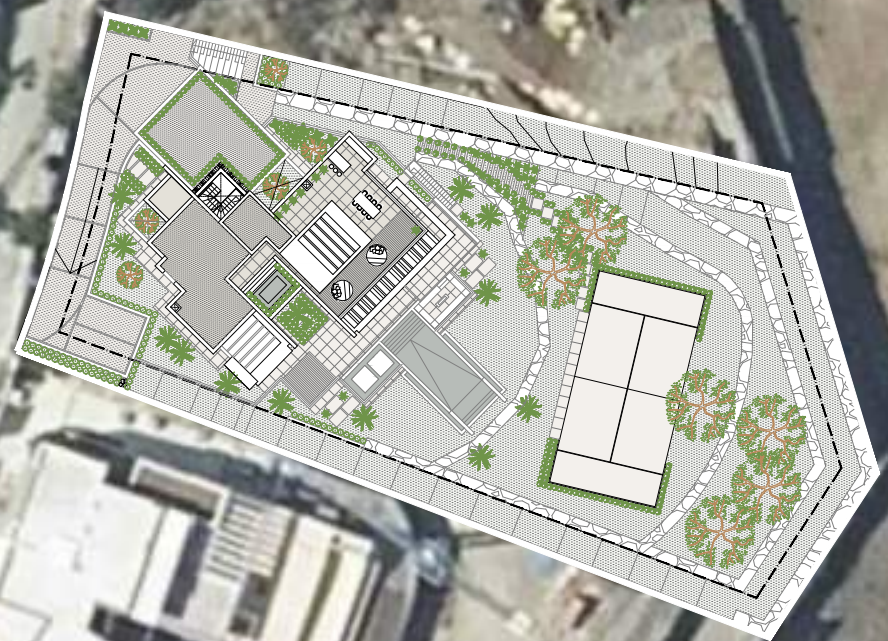
HOUSE
SURFACE
455 m2

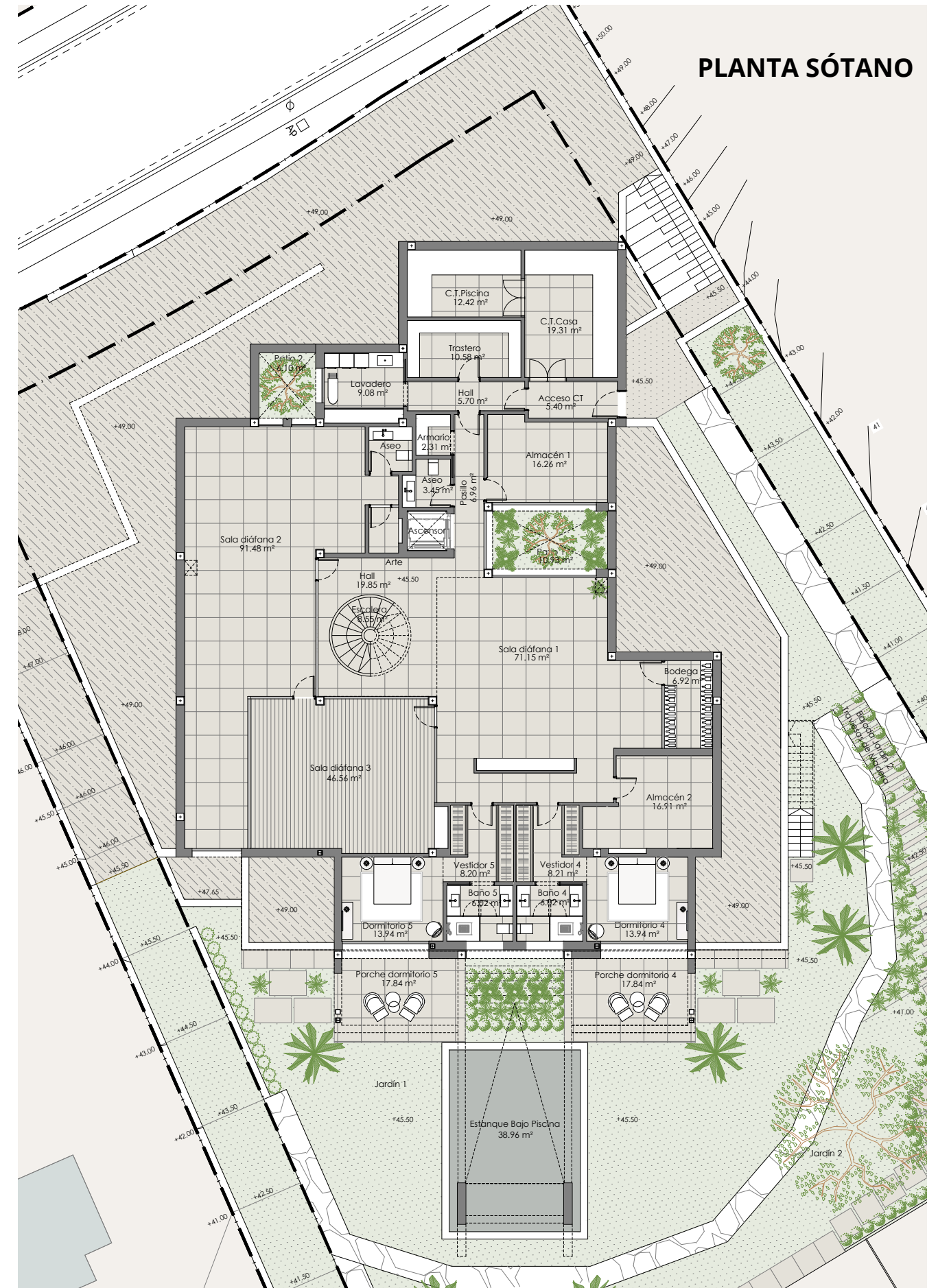
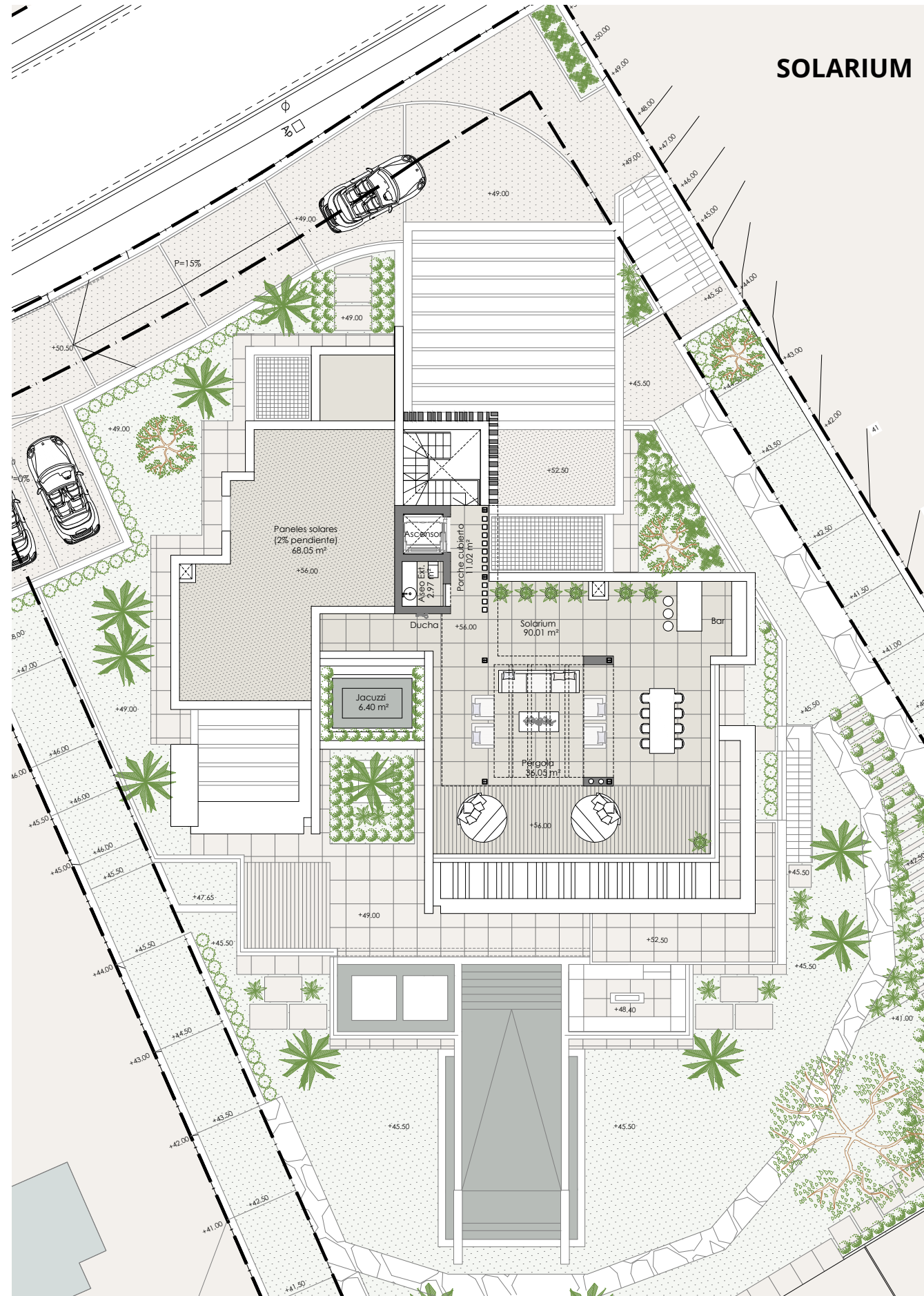


BASEMENT
SURFACE
482 m2



TERRACES
& PORCH
340 m2







IF YOU CAN DREAM IT, WE CAN DO IT.