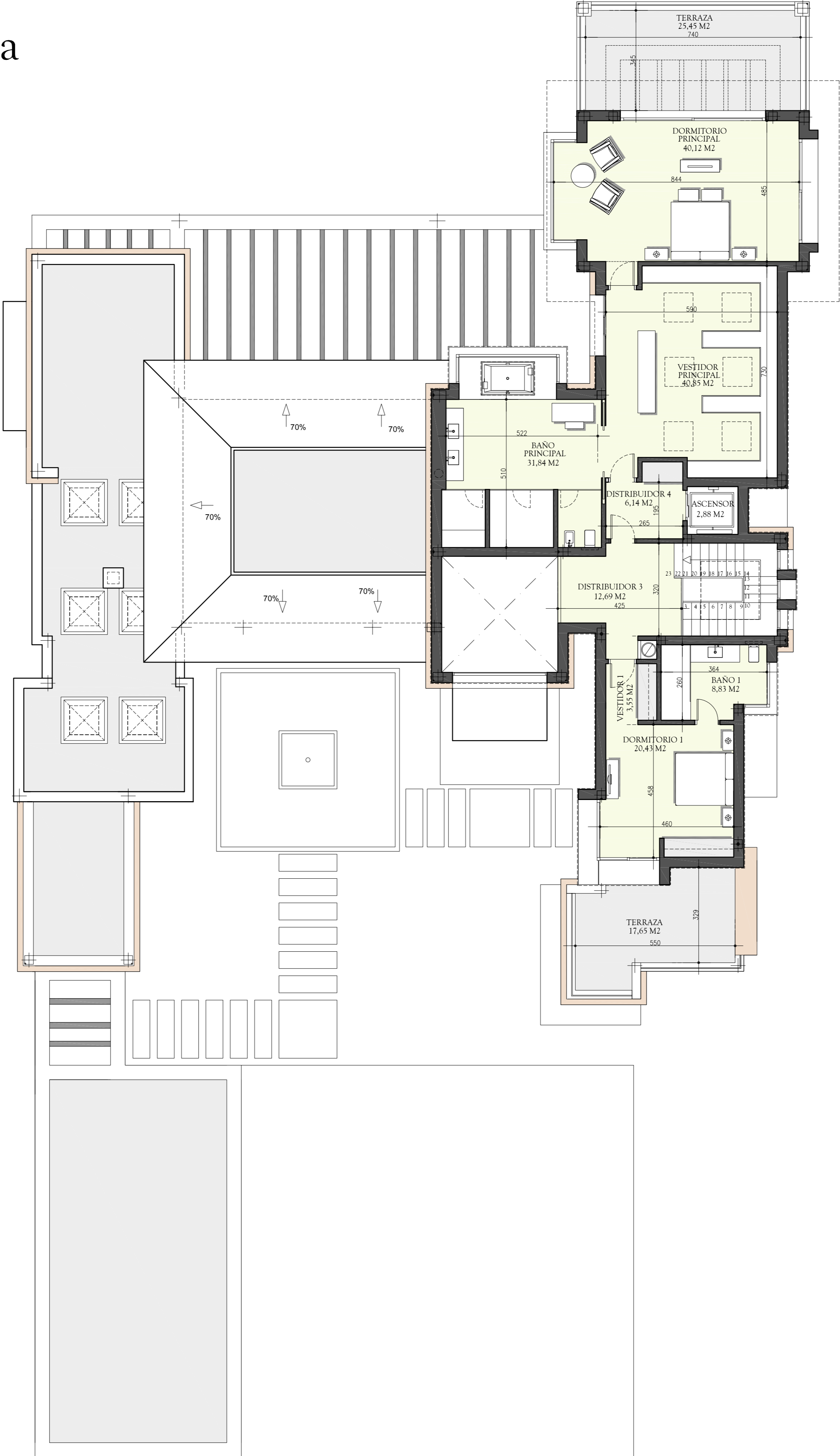


# Planta Alta



**RESUMEN DE SUPERFICIES:**

- SUP. UTIL VIVIENDA: 167,33 m<sup>2</sup>
- SUP. UTIL TERRAZAS: 43,10 m<sup>2</sup>
- SUP. UTIL TOTAL: **210,43 m<sup>2</sup>**
- SUP. CONSTRUIDA TOTAL: **224,07 m<sup>2</sup>**