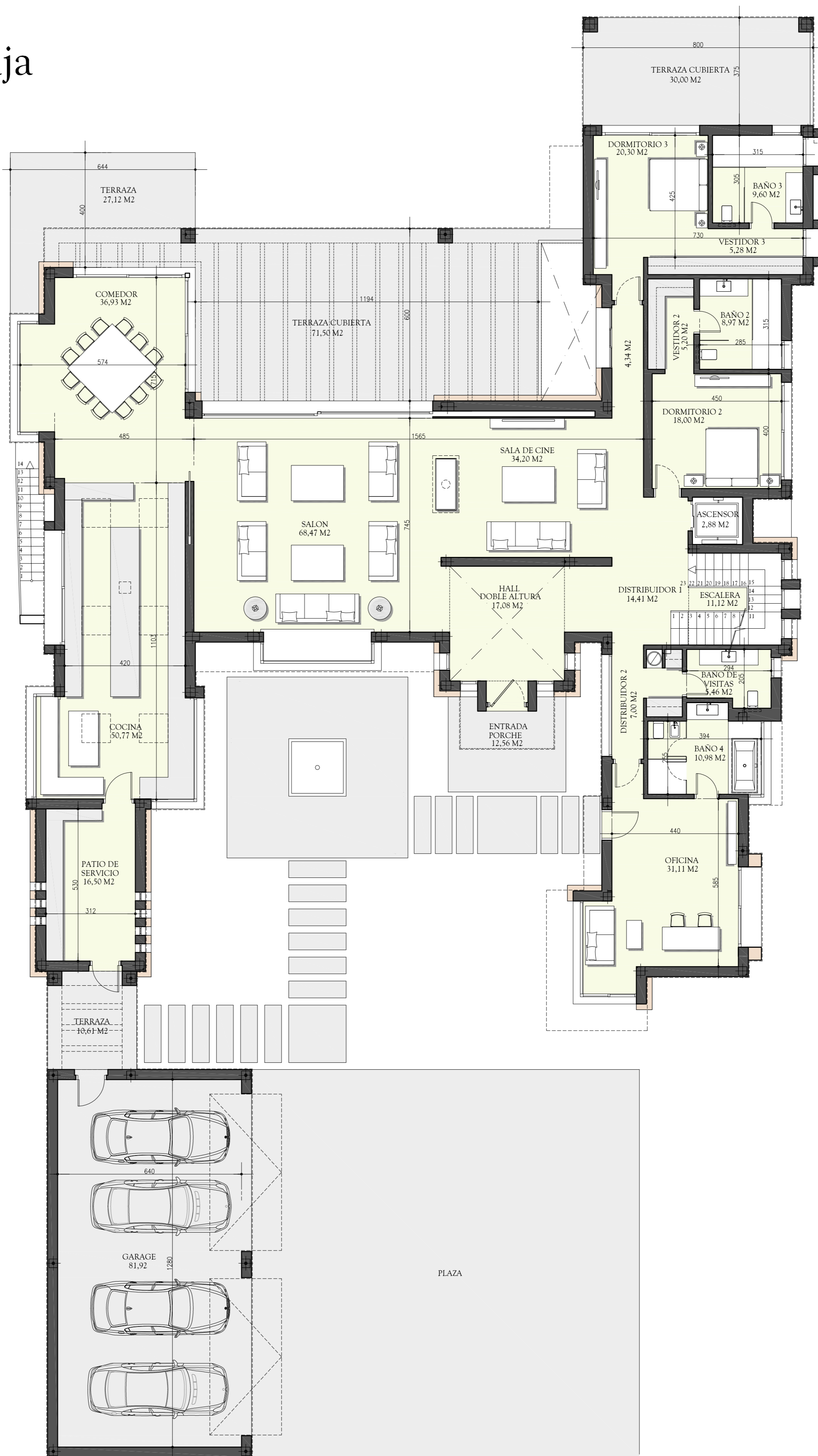


# Planta Baja



## RESUMEN DE SUPERFICIES:

- SUP. UTIL VIVIENDA: 460,52 m<sup>2</sup>
- SUP. UTIL TERRAZAS: 151,79 m<sup>2</sup>
- SUP. UTIL TOTAL: 612,31 m<sup>2</sup>
- SUP. CONSTRUIDA TOTAL: 555,46 m<sup>2</sup>